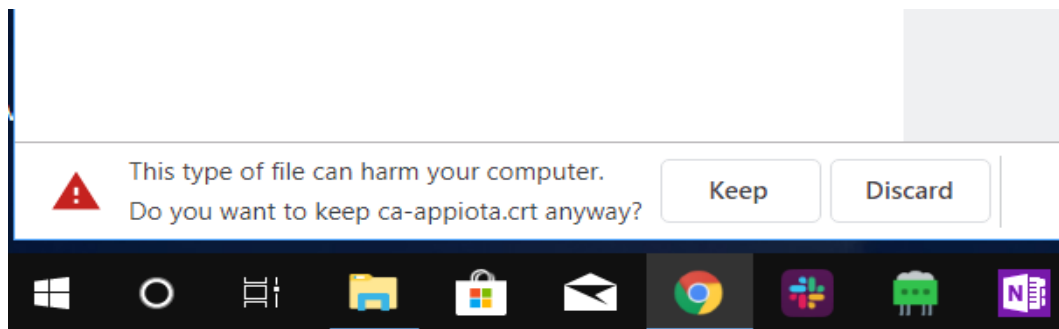


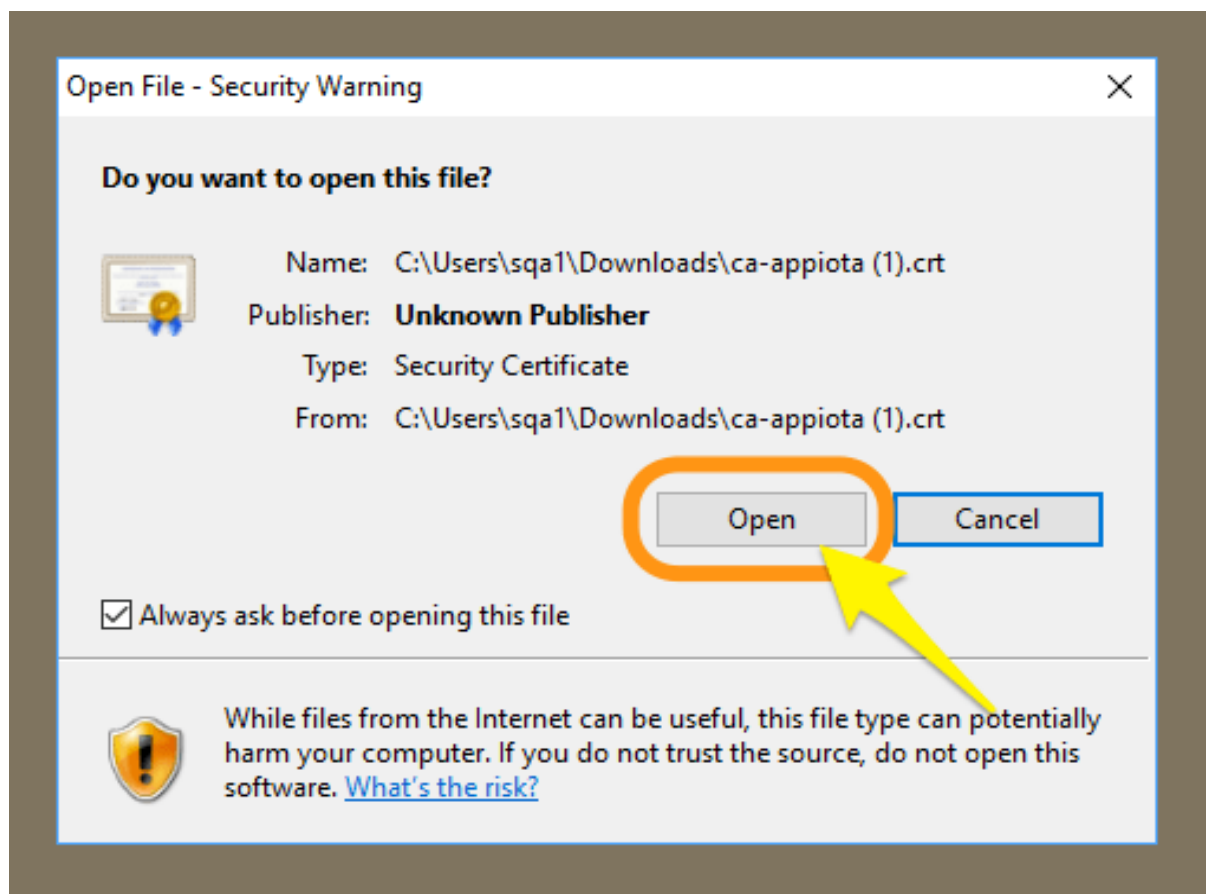
Netty Installation Procedure for Windows 10

1. Download the certificate essential for netty to communicate with kids device by clicking on download button .

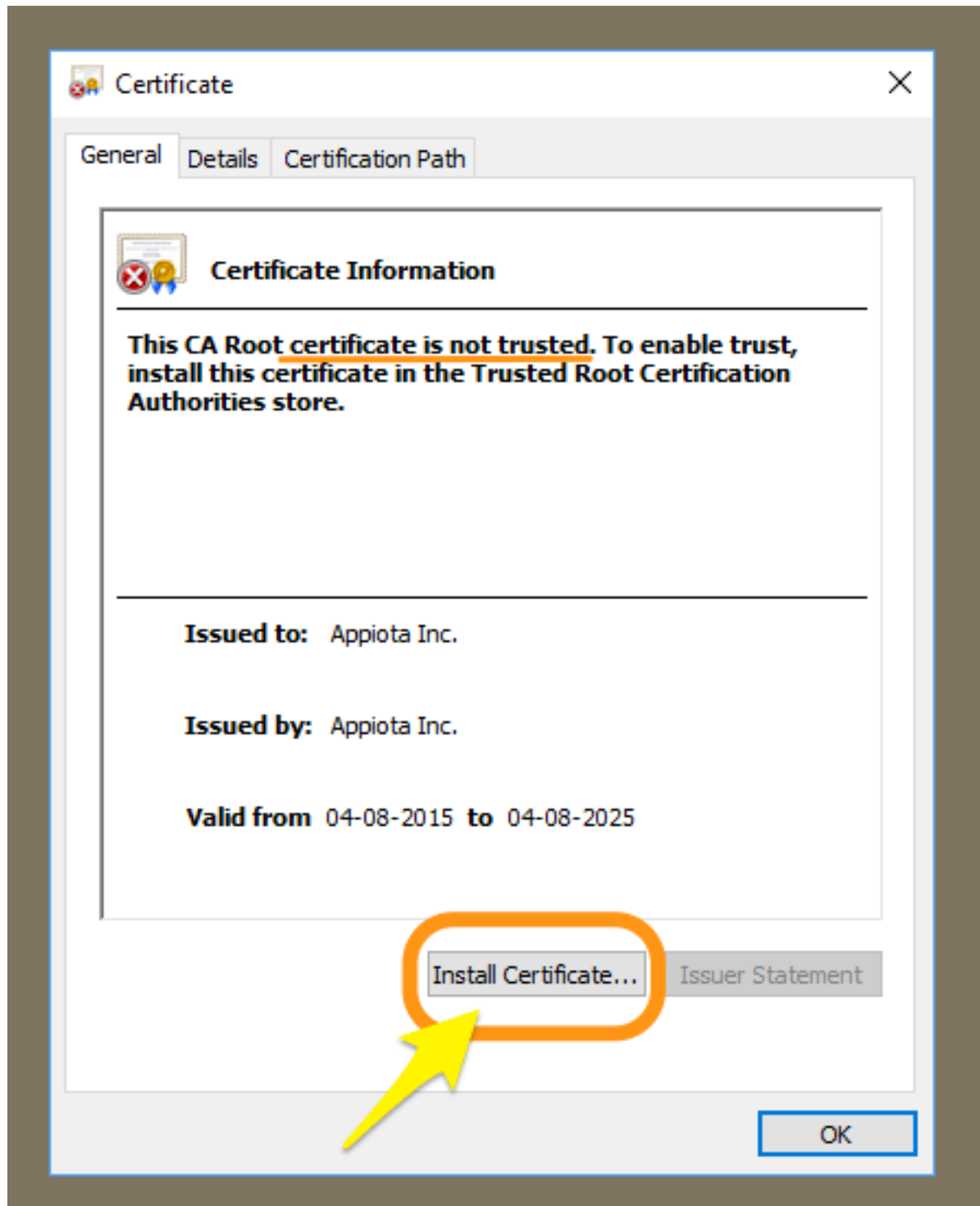
When browser gives warning **click "Keep"**



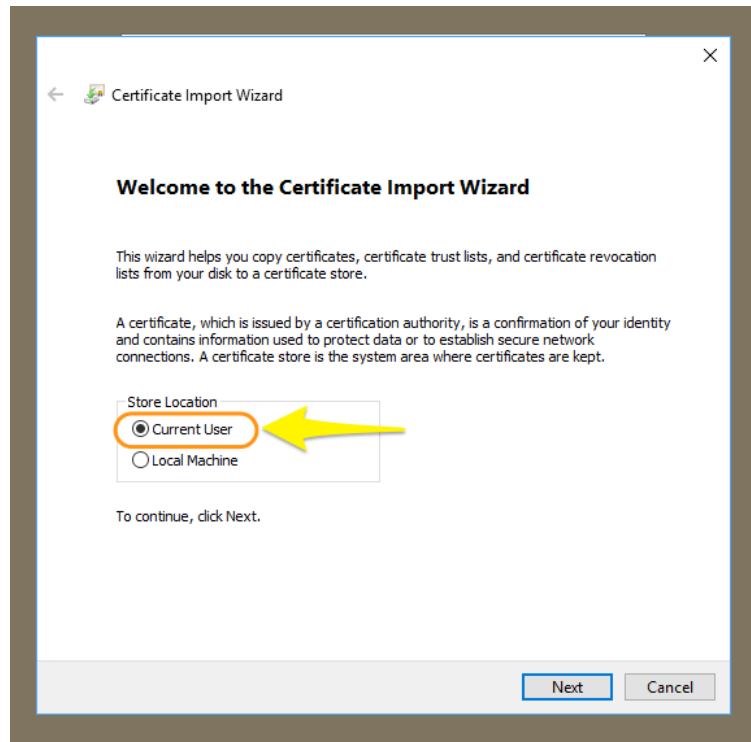
2. **Double Click** on the downloaded file : **ca-appiota.crt**
* windows might give a warning, **Click "Open"**



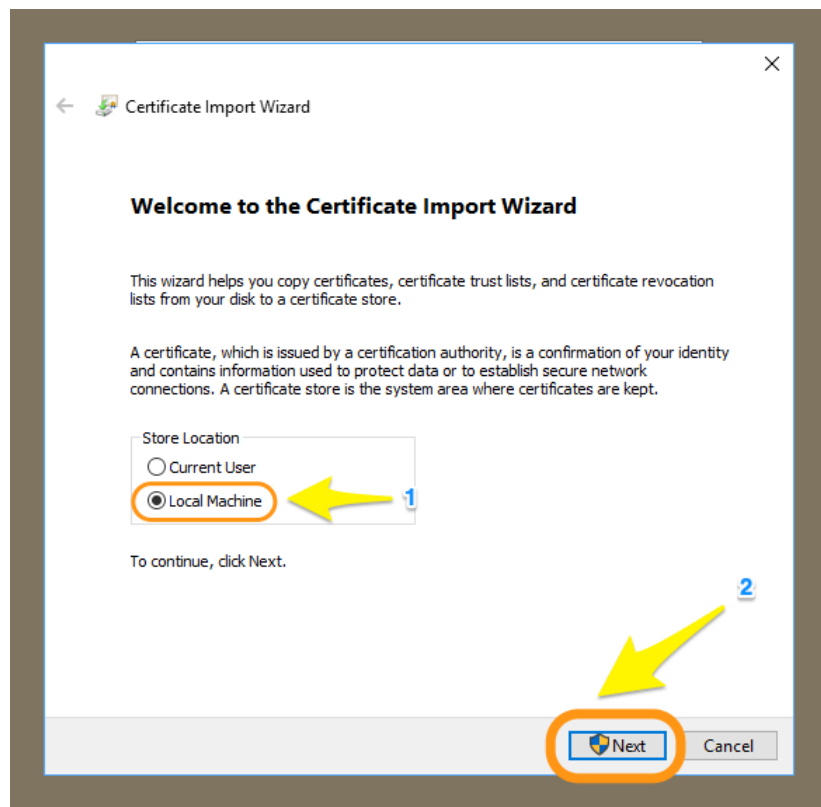
3. Certificate installation window will open , **Click on "Install Certificate"**



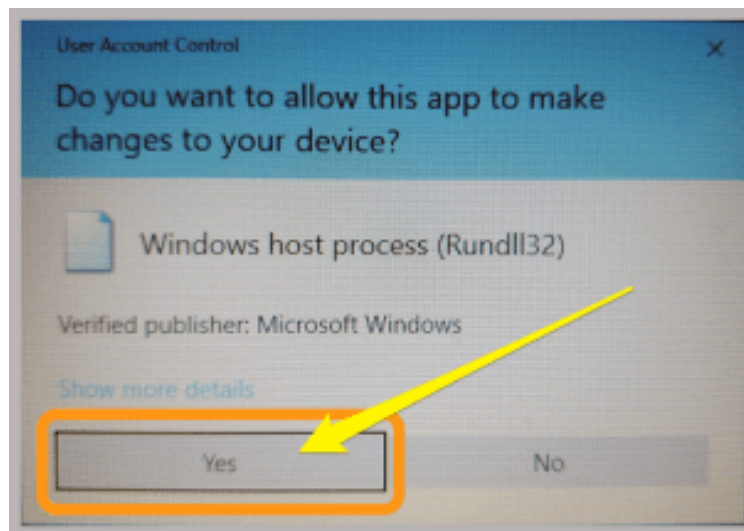
4. A Certificate Import Wizard will open with **Current User** selected by default.



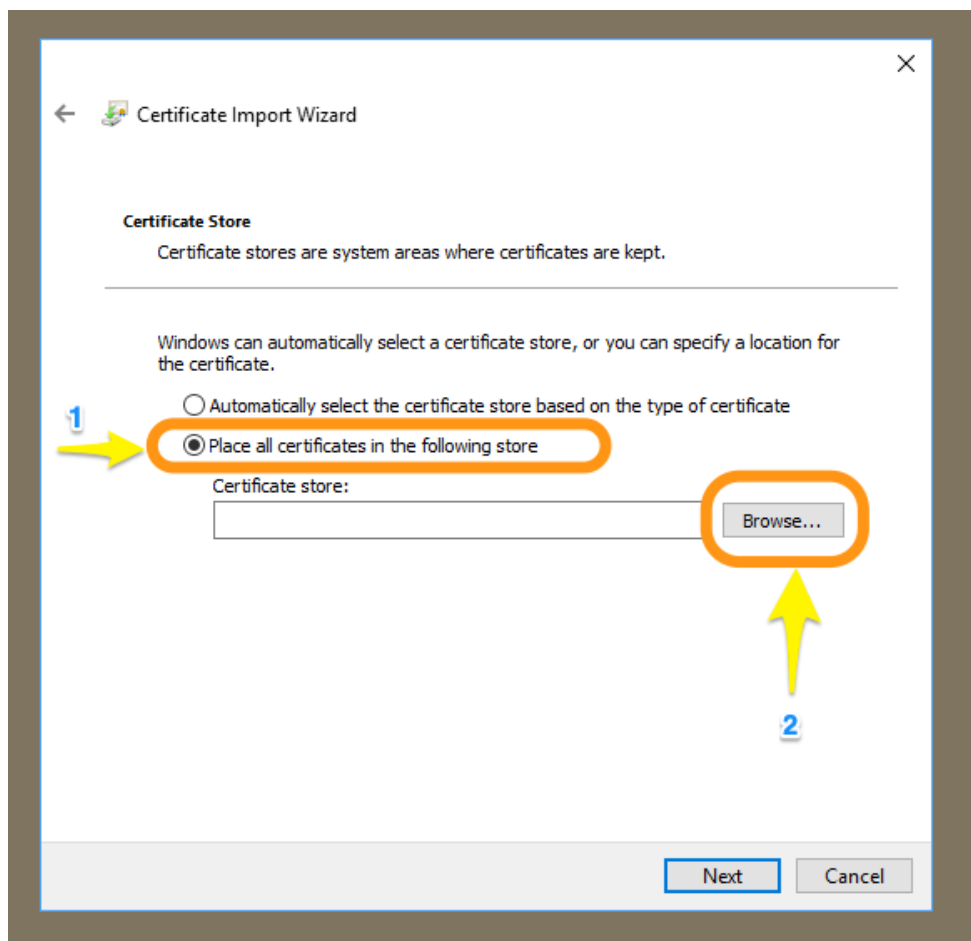
5. Change default selection by **selecting Local Machine** and then **Click "Next "**



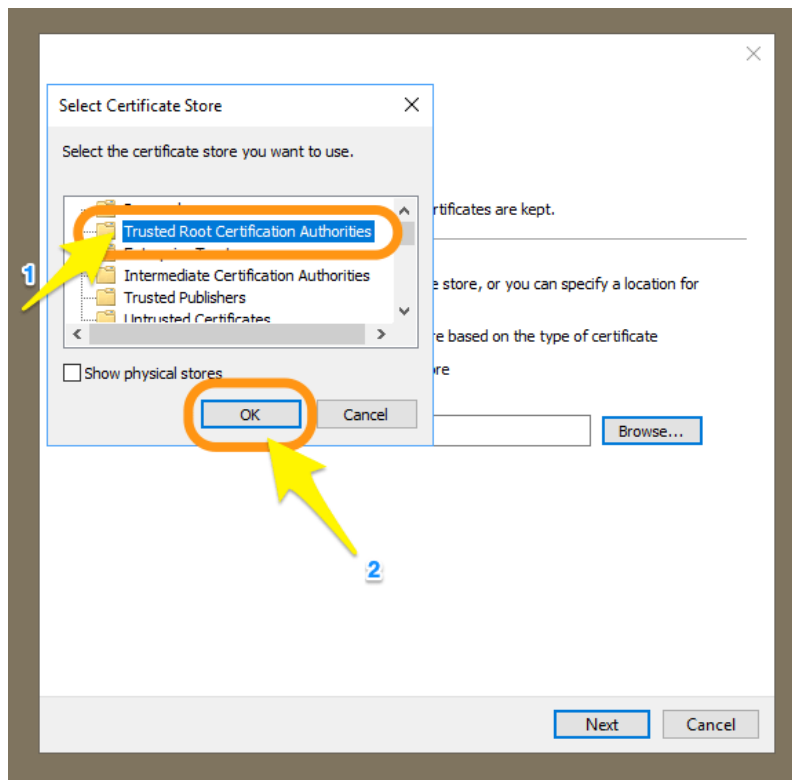
6. In the following window **click "Yes"**



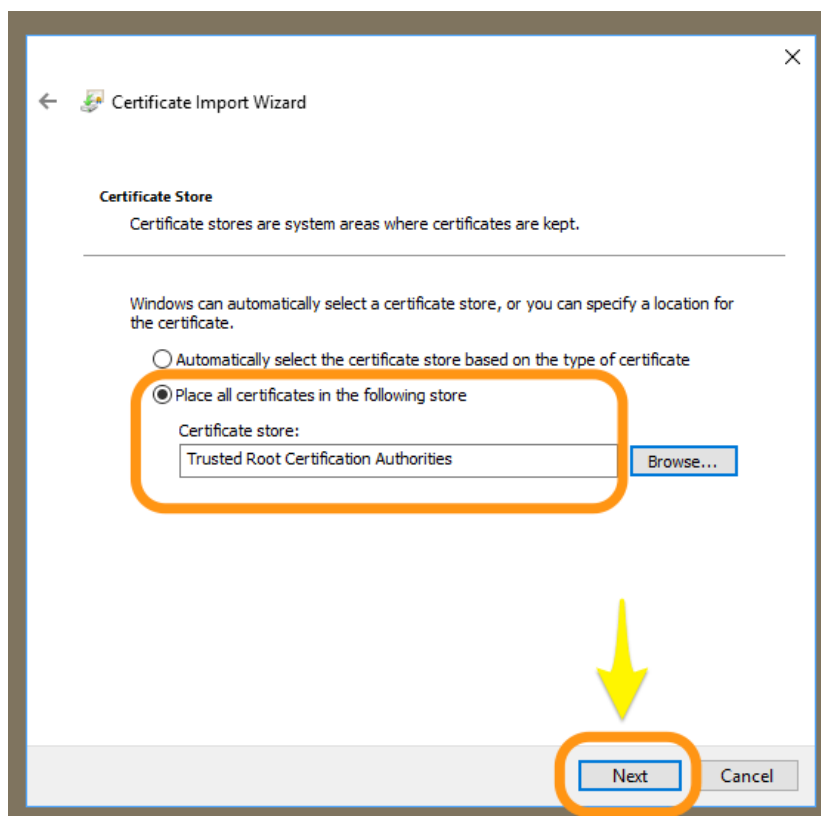
7. In the following window make sure "**place all certificates in following store**" is selected then **click "Browse"**



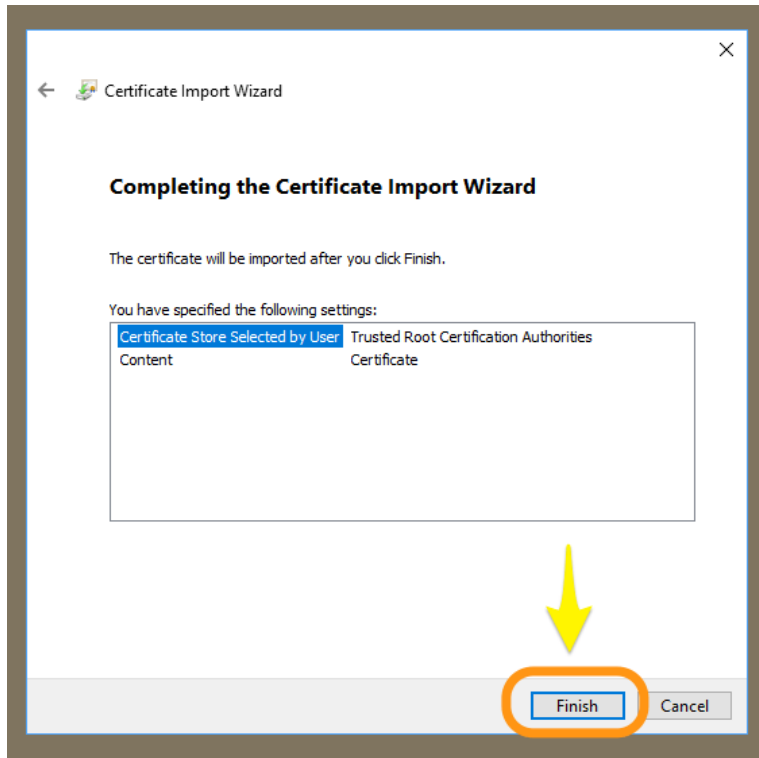
8. Select "Trusted Root Certification Authorities " and then click "Ok"



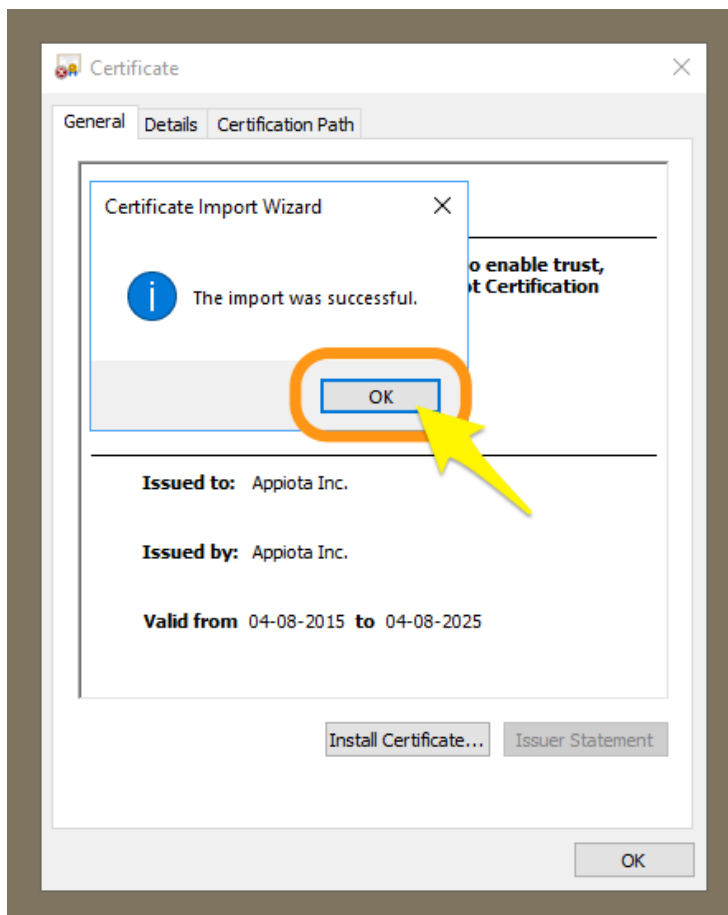
9. In following window click "Next"



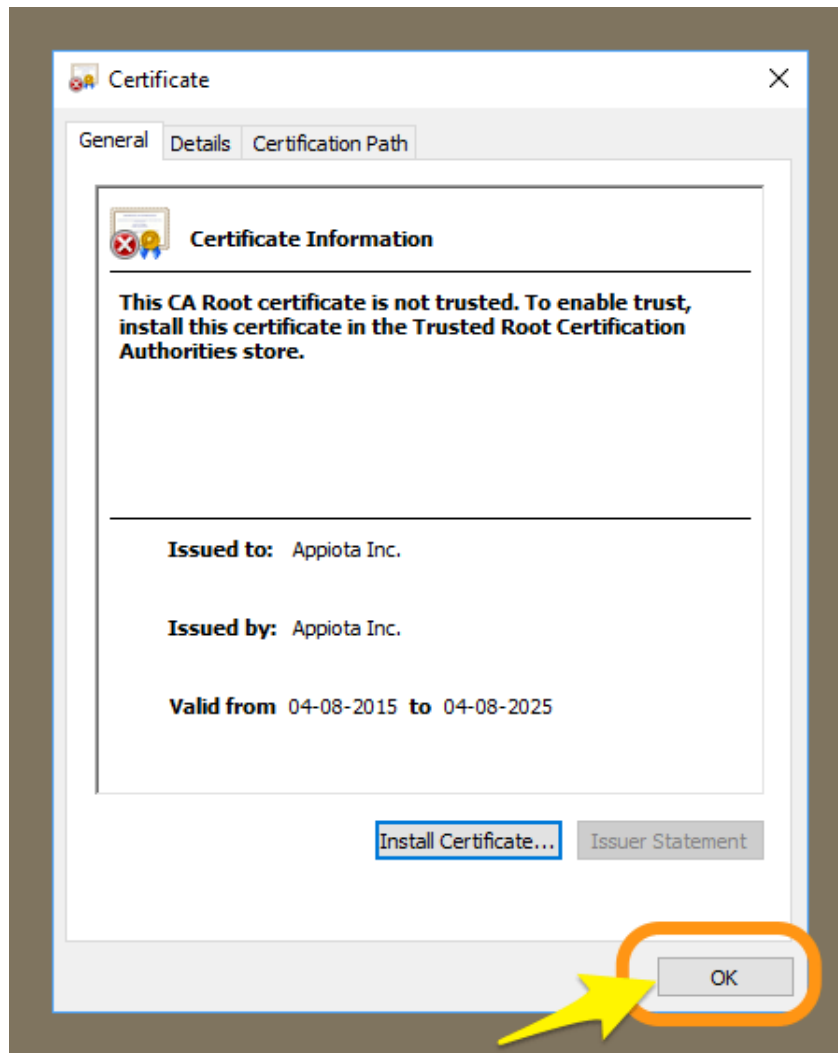
10. In following window **click "Finish"**



As import of certificate is successful **click "Ok"**



11. Now the certificate is installed successfully, **Click "Ok"**



Certificate installation now completed

It is essential to forget your present Wi-fi so kids stay connected only to Netty

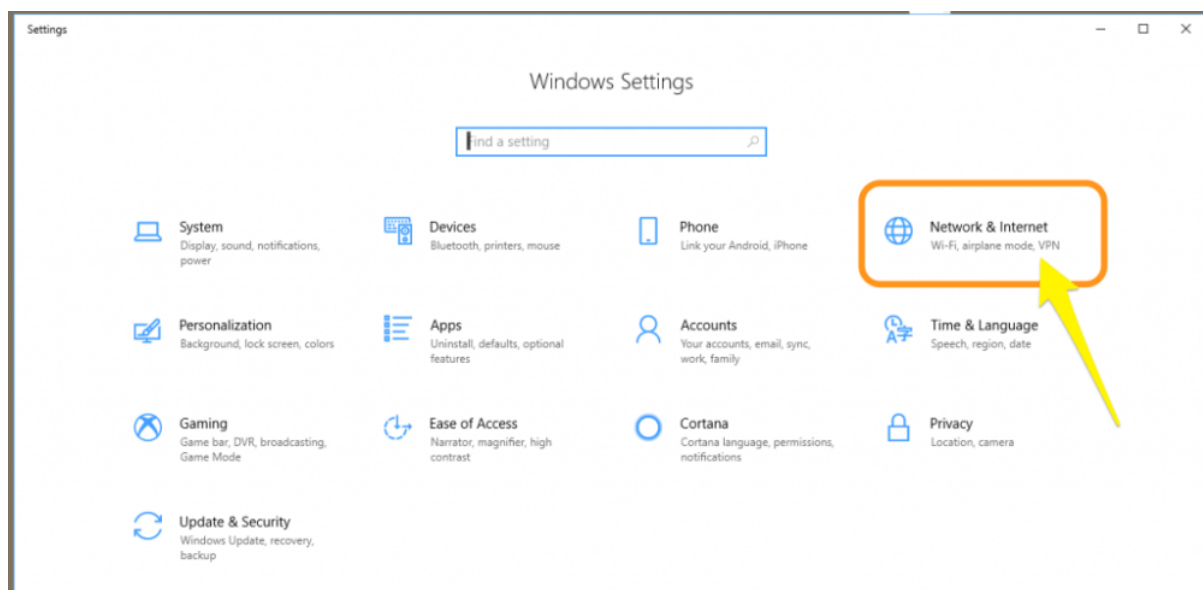
Delete a wireless network profile in Windows 10

Make sure you are in the range of Wi-Fi network you want to forget

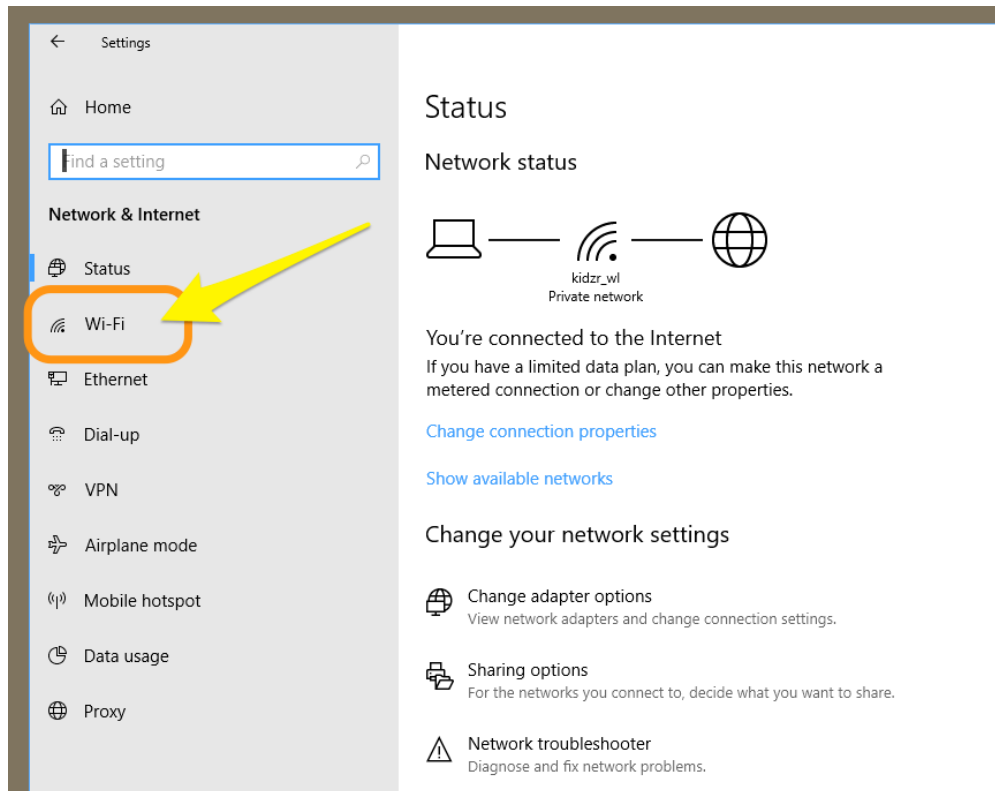
1. Open the Settings app from windows menu



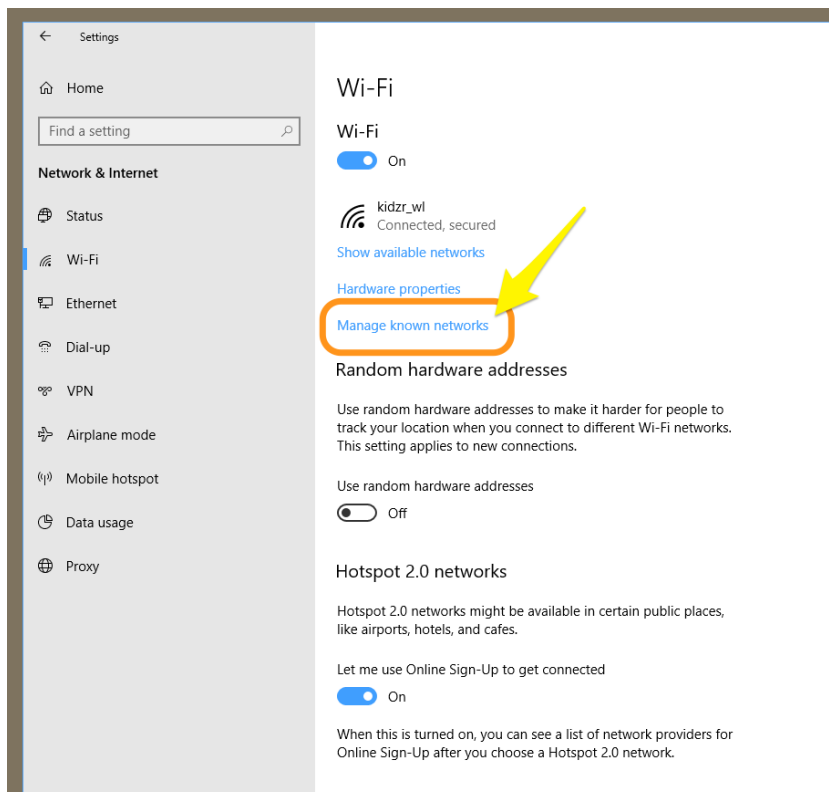
2. Click/tap on the Network & Internet icon.



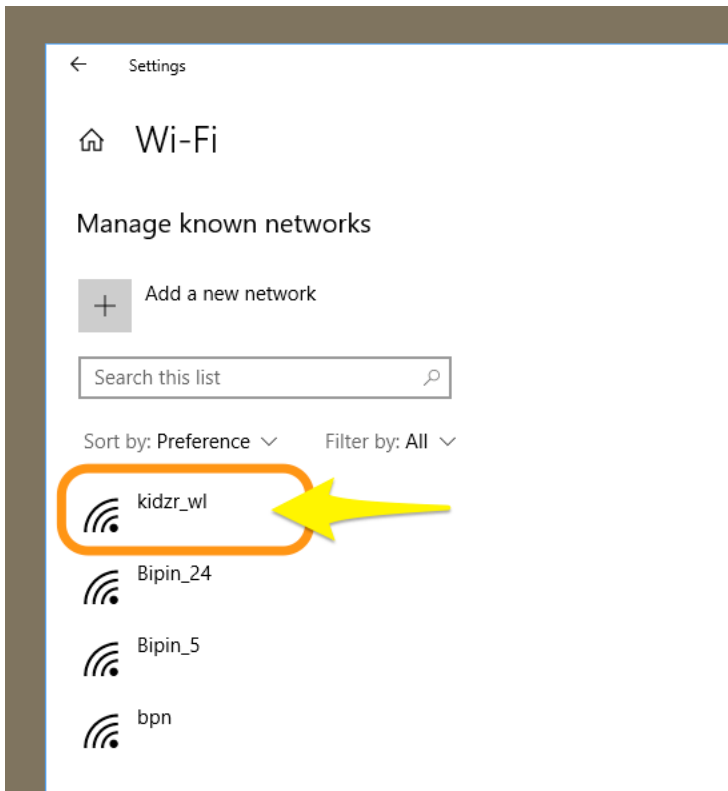
3. Click/tap on **Wi-Fi** in the left pane



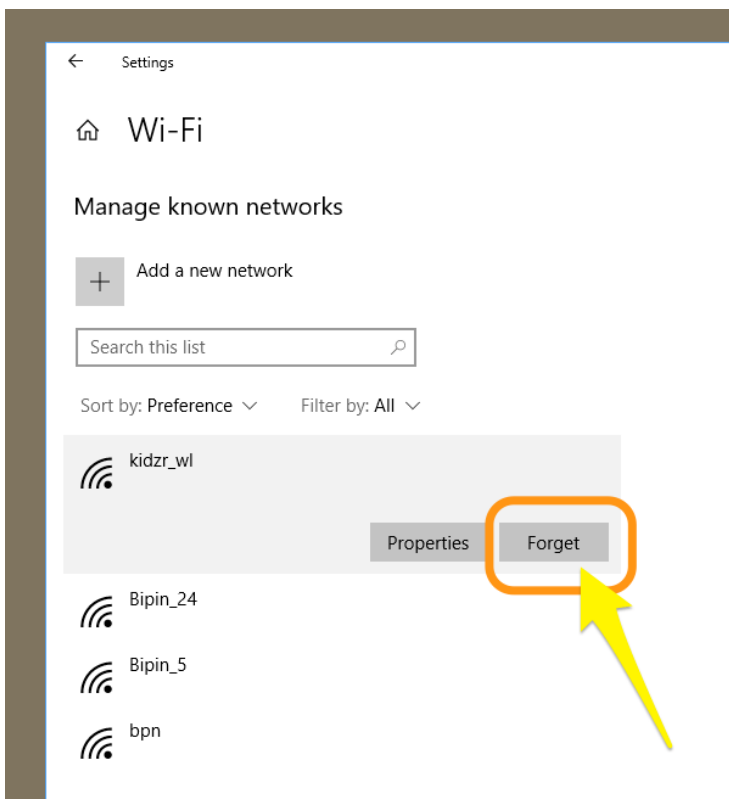
4. click/tap on the **Manage known networks** link under Wi-Fi on the right side



5. Click/tap on the wireless network name (ex: kidzr_wl) you want to manage



6. click/tap on Forget



7. When finished, you can close the Settings app if you like.